



WASATCH SOFTTRIP® TX FOR TEXTILE PRINTING

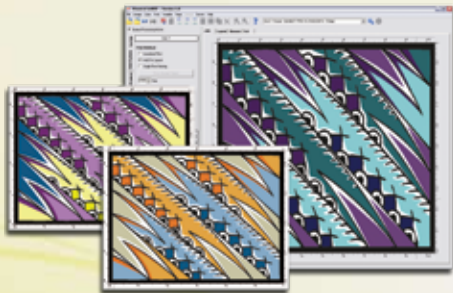
DIGITAL FABRIC PRINTING TOOLKIT

Developed exclusively for the needs of textile printers, SoftRIP TX is equipped with the tools you need to make your transition to digital printing seamless. With all the functionality of the original SoftRIP print management package, plus the specialty features required by textile printers, SoftRIP TX provides performance you won't find in any other RIP. Whatever your textile printing goals, you will succeed with SoftRIP.



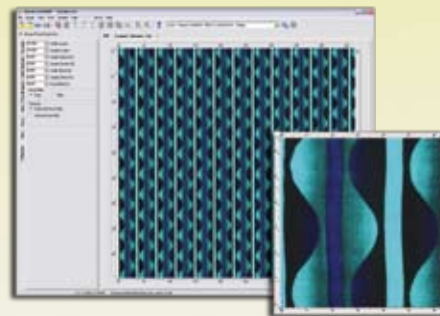
Efficient Repeats

Creating repeats in your design applications creates huge files and painful processing times. With SoftRIP TX you save computing time and memory by efficiently printing endless repeats. Wasatch's advanced re-sampling produce repeats without even the faintest visible seam, and since you only need to save and RIP a very small file you save gigabytes on your hard drive. You can even customize your repeats with advanced drop and slide controls.



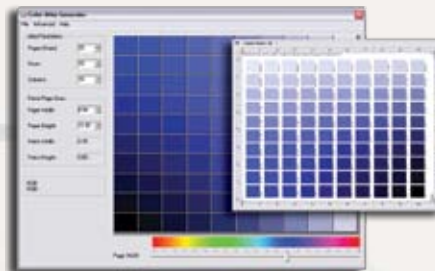
Exact Color Atlas Generator

SoftRIP TX makes it easy to match color accurately no matter how complicated your post processing with our Color Atlas Generator™. Simply specify and print a range of color swatches on your target fabric and perform your finishing steps. To reproduce exact colors, pick your desired swatch and enter its RGB value into SoftRIP or your graphics application.



Quick Colorways

Developed for the multiple colorways and indexed TIFF files typical of fabric designs, SoftRIP TX allows you to create, view, edit and manage multiple colorways on screen. With Wasatch's easy, intuitive interface you can easily store unlimited colorways for future use.



333 South 300 East
Salt Lake City, UT 84111, USA



+1.801.575.8043
800.894.1544



DIGITAL PRINTING EXCELLENCE

THE #1 RIP FOR TEXTILE PRINTING

"There is a new generation of textile designers emerging from our Universities. They are creative, they know what they want, and they are comfortable with new technologies that enable them to be much more productive than previous generations of designers. Wasatch SoftRIP is an example of that enabling new technology."

Professor Hitoshi Ujiie, Philadelphia University, School of Textiles and Materials Technology

Textile Features for Great Designs

Specialized re-sampling and halftoning eliminates seams between repeats

Fast processing RIPs only a single repeat pattern, efficiently repeating it during printing

Easy tools to manage and even create multiple colorways right in the RIP

Color Database feature lets you maintain your own Color Kitchen of named entries

Ability to route colors through ICC management or direct to print heads

Digital Engraving Data uses grayscale LAB TIFF files, and lets you specify color prior to composite color output

Tools to help you get the most out of your 3rd party color management software

Tools for High-Quality Color on Any Media

Thousands of Plug-and Play Imaging Configurations for easy out-of-the box color printing

16-bit rendering reproduces color with the greatest level of intricacy for high-definition output

Easy correction curves to make adjustments as you would in standard design applications

Master Color Transforms flowchart shows how color is managed from file to printed page

3D Profile Viewer and Out-of-Gamut warning for detecting colors that cannot be printed with current profiles

Advanced tools for indexed and spot colors, including a spot color capture tool for handheld colorimeters

Specialty input profiles for larger density ranges & bright colors

Simple Workflow Features Get You Up and Running Fast

Drive up to four printers without additional charges

Quick printer setup that requires no previous RIP experience to complete

The Digital Tool Kit™ puts key file preparation tasks on the main screen so you're ready to RIP fast

Easy workflow options for processing files individually or as part of a complete layout

Master Queues Manager™ for tracking the status of your production in real-time

Smart Nesting™ to create media and time saving layouts automatically

Interactive real-time preview and detailed image attribute displays allow for accurate image adjustments

Shortcut keys, drag and drop operations, and icon tool bars to speed usage

True cropping feature RIPs only selected areas instead of entire page, speeding up processing

Advanced Workflow Features Put the Power in your Production

Unlimited hotfolders for direct printing from any application or platform

Automatic file preparation from any workstation with hotfolderbased scale, mirror and rotation capabilities

Wasatch ImageNET® to print directly from networked Mac, PC or Unix workstations

Automated image rotation nesting to increase Smart Nesting™ media savings

Advanced tiling features provide superior flexibility

Archiving feature lets you save jobs from print queues